

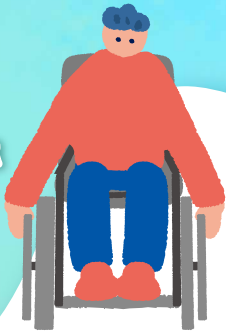
AIVIL

Leak-Resistant
(Silicone Neck)

Waterproof

Odor-Resistant
(EVA Coating)

**IN A WHEELCHAIR
STAY SEATED WITHOUT TRANSFER**



**DURING PREGNANCY
BELLY-FRIENDLY POSITION**

Created to make professional shampoo care accessible to everyone.

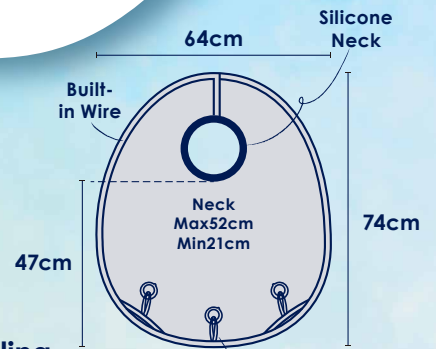
**WITH NECK OR BACK CONCERNS
NO BENDING FORWARD REQUIRED**



Salon

Home

Care Facility



Unique wire design adapts to any posture and prevents water from spilling. A functional cape that creates a "professional shampoo space" anywhere.

3 Suction Cups
Suction Cups for Sink Attachment and Water Flow Guidance

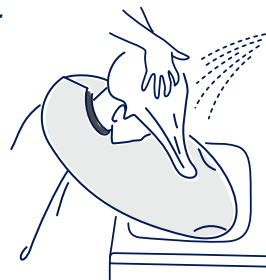
How to Use

Just flip it to suit both positions!



For those who prefer lying back (Back Shampoo)

- 1 Position the wide side at the back.
- 2 Secure the neck with Velcro.
- 3 Attach the suction cups to the sink to prevent slipping.



For those who prefer leaning forward (Front Shampoo)

- 1 Position the wide side at the front.
- 2 Secure the neck with Velcro.
- 3 Fix the suction cups to allow smooth drainage without bending forward.

Water drains smoothly through the edge holes.

AIVIL PROCARE CAPE

Model:CC-25K01 Size:740×640mm Neck:210 ~ 520mm
Weight:150g Material: Nylon, EVA (Bag: Polyester)



COMES WITH A CONVENIENT CARRYING POUCH

CHECK HERE FOR MORE DETAILS



Professional Choice for High-Demand Mobile Beauty



"The Three Essential Tools for Mobile Beauty"



Solving the Triple Problems:
"Tight Spaces, No Mess, No Mirror" *



Like a wearable salon cart.

Dramatically boost your work efficiency
Large-capacity tubs fit perfectly

AIVIL COLORING TUB

Size:185×110×60mm
Capacity:Approx.600mL
Weight:92g
Material Body: PP / Bottom Rubber: TPR



AIVIL MULTI-TOOL TRAY

Size:250×140mm (folded)
250×140×135mm (expanded)
Weight :340g (including 2 belts)
Material:TPU
(Thermoplastic Polyurethane Elastomer)



No Mess on the Floor

Holds even tiny hairs with static electricity
Simple and easy – just spread out and roll up

AIVIL MOBILE HAIRCUT SHEET SE

Size: Double roll – 900mm×100m
Weight: 1.9 kg Thickness:0.01mm Material: Polyethylene



Make a dresser portable

Lightweight mirror × foldable stand
Use together to create a professional mirror setup anywhere

E MIRROR

Size:42cm×26cm×20mm Mirror:28×20.5cm
Weight: Approx.480g
Material: Frame: Urethane resin Mirror: Glass



E STAND

Size: Approx.550×100×80mm (folded)
Weight: Approx.1000g Material: Aluminum
Accessories: Storage case included

